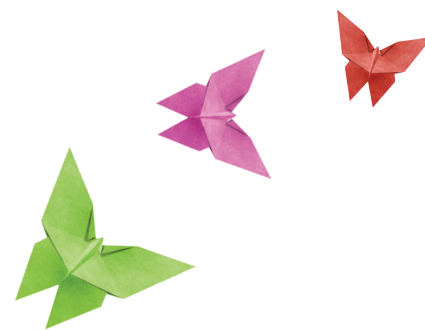


When visiting a child care or early learning program, there are questions you can ask to help you determine which program is best for your child and family. These questions are based on indicators of quality that are embedded in the Grow NJ Kids standards. You can search for quality care in your area at ChildCareNJ.gov.



Safe, Healthy Learning Environment

- Is there regular communication between program staff/teachers and parents? How is the information communicated (email, phone calls, letters sent home with child)?
- Is the space clean?
- Do you see staff and children washing their hands before and after meals and diapering? Is the facility safe and secure?
- Is the outdoor play space safe, clean, free of litter and broken glass?
- What meals are provided by the program? Are children allowed to bring their own food for religious or dietary reasons?
- Does the program have an oral health or a tooth brushing policy?
- Does the program check the children's eyes, hearing, teeth, and growth by providing screenings?
- Does the program support breastfeeding (breast milk storage/place to breastfeed)?
- Are children of different ages cared for together or are they grouped by age?
- How are children supervised during different situations (sleep or outside play)?

Curriculum and Learning Environment

- How many children will be in your child's class/group? What are the ages of the children in the classroom/home?
- Is there a daily schedule?
- Does the daily schedule incorporate both indoor and outdoor play opportunities?
- Do you observe positive, warm and nurturing teacher-child interactions and conversations while in the classroom/home?
- Do you see children interacting with each other?
- Do the children have access to books and other materials?
- Are the children read to each day?
- Does the program use a research-based curriculum (age appropriate for infants and young children)?
- Are children given "free play" time (For example, are children allowed to choose the book they'd like to read or what activity they'd like to do)?

Family and Community Engagement

- Does the program have an open door policy? Are parents allowed to visit at any time?
- Does the program make community resources (events, information regarding services) available to families?
- Does the program embrace your child's home language in the classroom/home and/or in the materials being used?
- Does the program share information about activities/lessons being worked on so parents can reinforce at home? For infants, is there a daily log?

- Does the program have opportunities for parents to volunteer in the classroom/home?
- Does the program offer parent workshops?
- Does the program have a parent council or parent group?

Workforce/Professional Development

- What is the education level of the staff?
- How long have the staff been employed with the program?
- What types of trainings do staff attend each year?
- How many staff have received Cardio Pulmonary Resuscitation (CPR) and First Aid training?
- If the program uses a research-based curriculum, have the staff had formal curriculum training?

Administration and Management

- Does the program have a current child care license or family child care registration? (If applicable, as some school district programs are not required to have a child care license.)
- What is the tuition/cost? Other fees?
- Does the program have a parent handbook that outlines policies and procedures including child illness/sickness, emergencies, discipline?
- Is the program director on site during operating hours?
- What is the daily child check-in and check-out policy when dropping off and picking up your child?
- Is the program enrolled in Grow NJ Kids?

